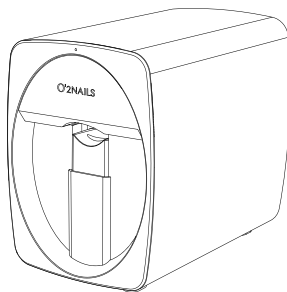


# O'2NAILS



## Mobile Nail Printer **M1**

User Manual

Please read this User Manual carefully  
before using this printer and keep it properly for future reference.



# Catalog

Product Introduction .....	01
Application Download .....	02
Application Introduction .....	03
Register .....	06
List of All Accessories .....	07
Connect Power to Turn on the Machine .....	08
Install the Cartridge .....	09
Connect the Machine WiFi .....	11
Print a Test Pattern .....	12
Ink Cartridge Test .....	15
How to replace the ink cartridge .....	20

# Product Introduction

## Mobile Nail Printer M1

A mobile smart device that can print any pattern on the nail. The product is suitable for commercial nail art services. It's wirelessly controlled by O'2NAILS application in the phone or tablet.

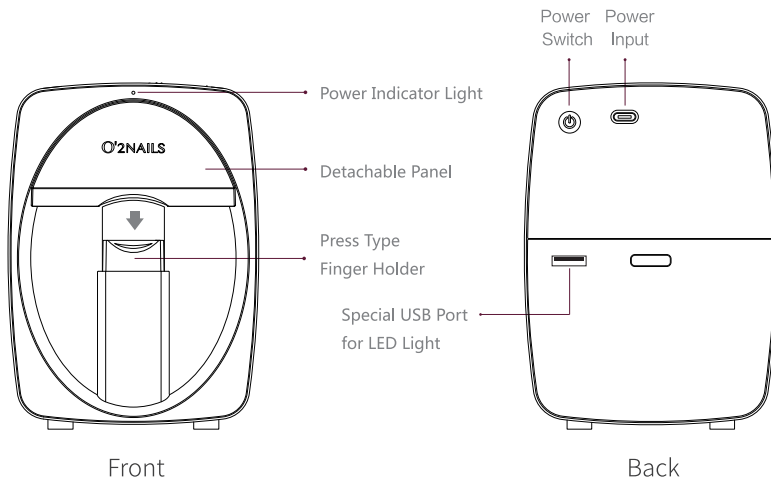
Model: FM-NP1801V

Power Input : 5V  $\equiv$  2A

Power Rating: 10W

Machine Dimension: 160x100x139 ( mm )

Net Weight: 0.5KG



### Power Switch



Press the switch to turn on the machine. Press and hold the switch for more than 2s to turn off the machine.

After the machine is started, press the switch twice in a row: control the cartridge holder to come out/in.

# Application Download

(Support iOS and Android system)

Method one:



O2Nails



Scan QR code  
to download

Method two:



App Store



Search "O2NAILS"



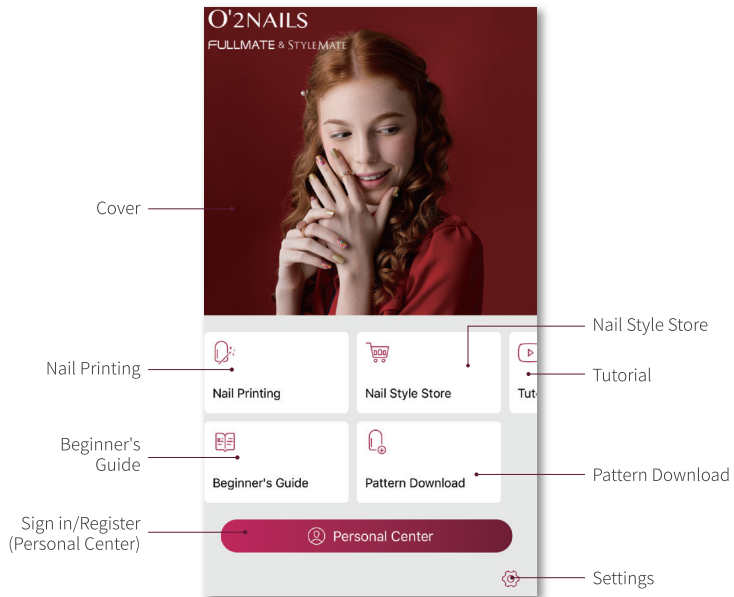
Download

Method three:

Download from official website [WWW.O2NAILS.COM](http://WWW.O2NAILS.COM)

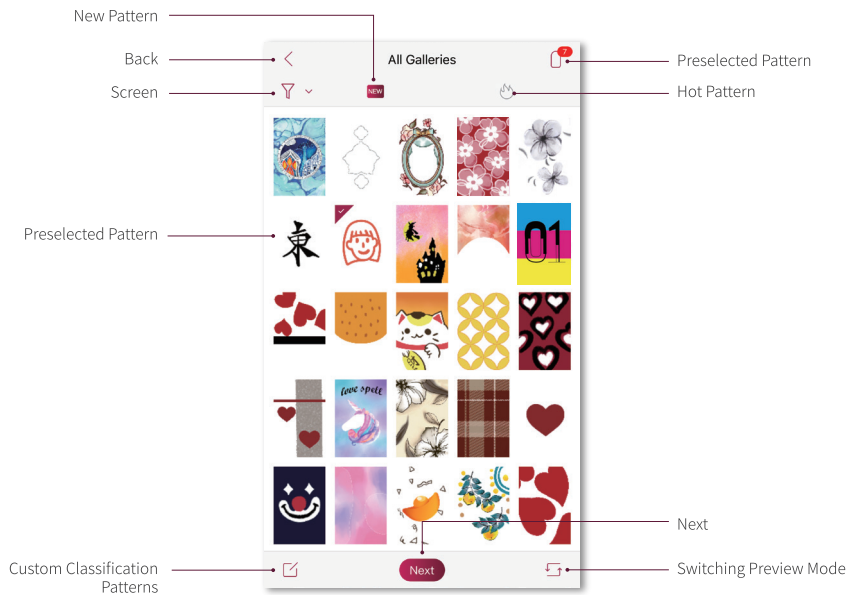
# Application Introduction

## Homepage



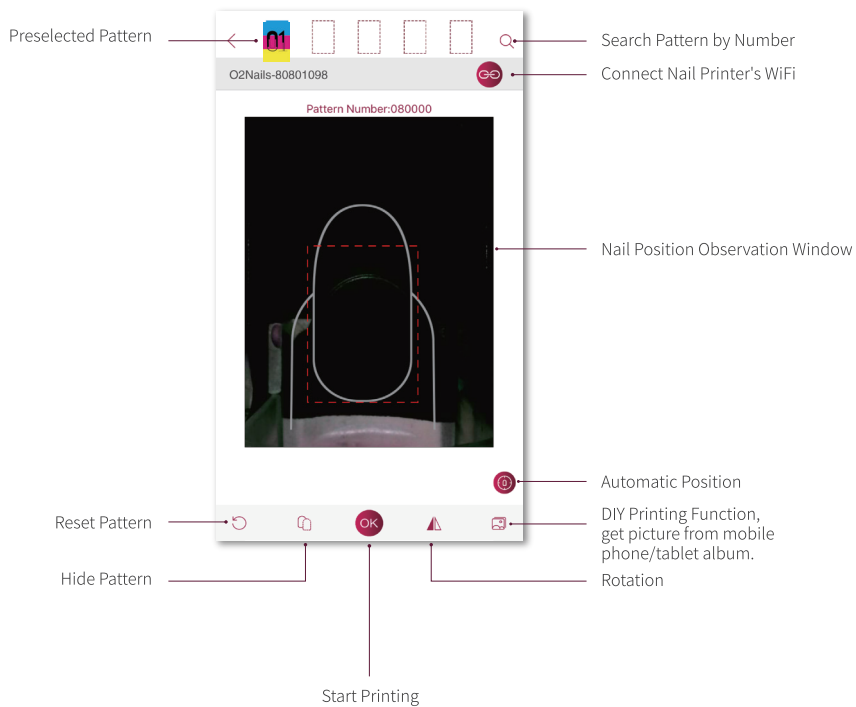
# Application Introduction

## Nail Printing-All Galleries Select Pattern



# Application Introduction

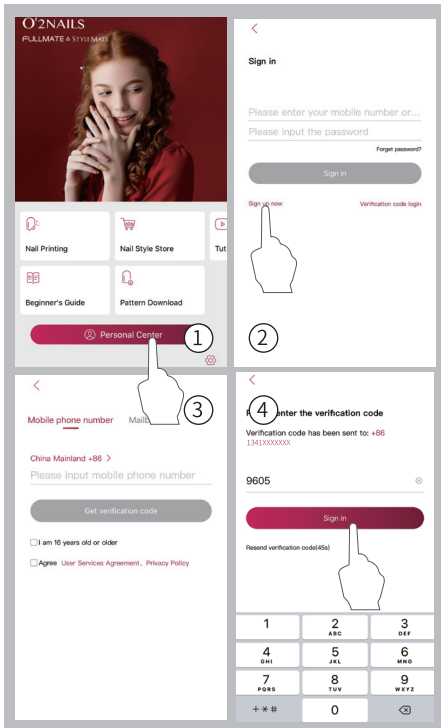
## Nail Printing-Operation Window



# Register

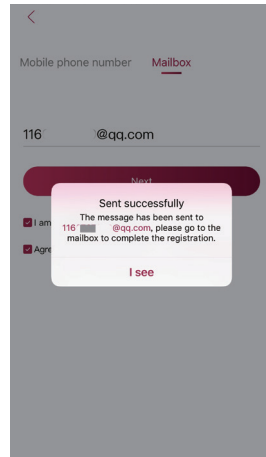
## Register By Mobile Phone Number

1. Click Sign in/Register;
2. Click "Sign up now";
3. Enter mobile phone number, and get verification code;
4. Enter verification code, and set password, register finished.

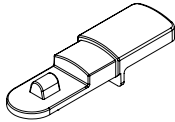
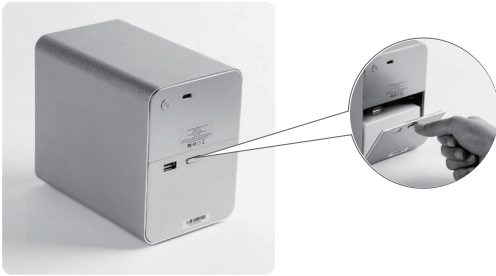


## Register By Mailbox

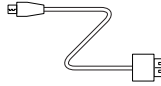
1. Click Sign in/Register;
2. Click "Sign up now", and select "Mailbox";
3. Enter email address and click "next";
4. Check email and finish the register.



# List of All Accessories



Artificial Nail Holder X1



USB-C Power Cable X1



Cartridge X1



QC Standard Test Pattern  
Compared Card  
X1



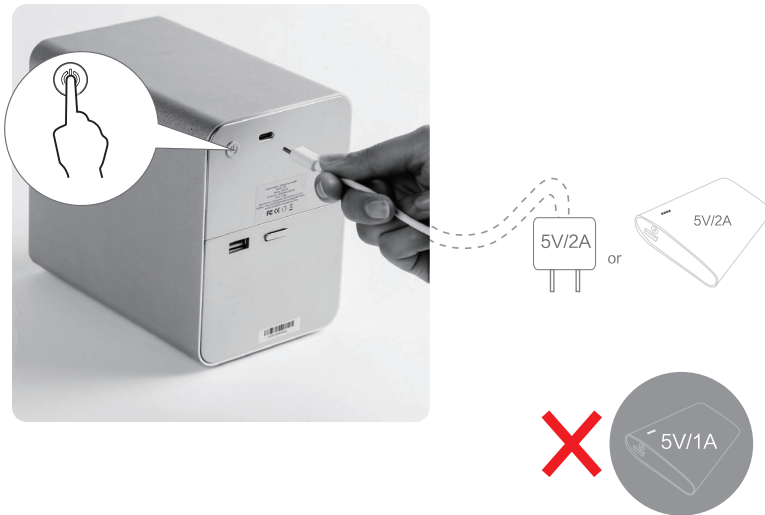
Test Paper X1



User Manual X1

# Connect Power to Turn on the Machine

- 1.The USB cable connects the machine and mobile phone charger (5V/2A).
- 2.Press the switch to turn on the machine, and there should be a “di” sound.

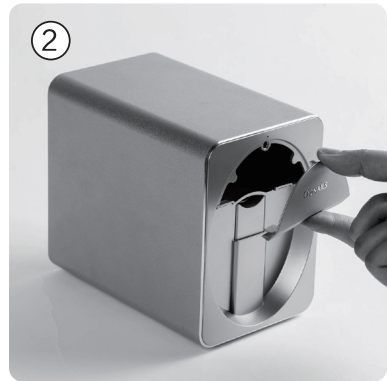


## Power Switch

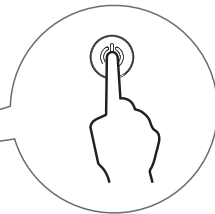


Press the switch to turn on the machine. Press and hold the switch for more than 2s to turn off the machine.  
After the machine is started, press the switch twice in a row: control the cartridge holder to come out/in.

# Install the Cartridge



Take Down the Front Panel

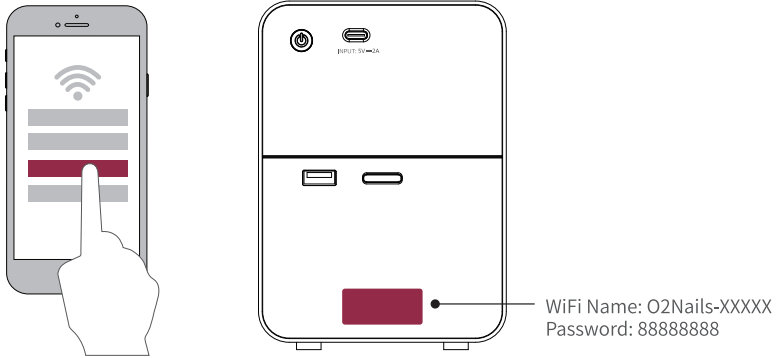


Press the switch twice in a row, you'll hear the sound "di di di", and the cartridge holder will come out automatically.

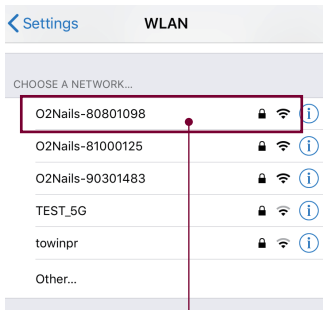


# Connect the Machine WiFi

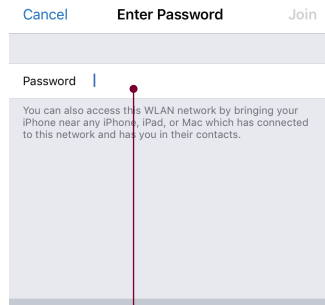
Go to wireless network setting to connect the machine WiFi on mobile phone or tablet.



Androide System: Open Settings-Connect-Open WLAN-Select WiFi Hotspot-Enter Password  
iOS System: Open Settings-WLAN-Open-Select WiFi Hotspot-Enter Password



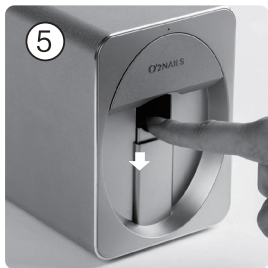
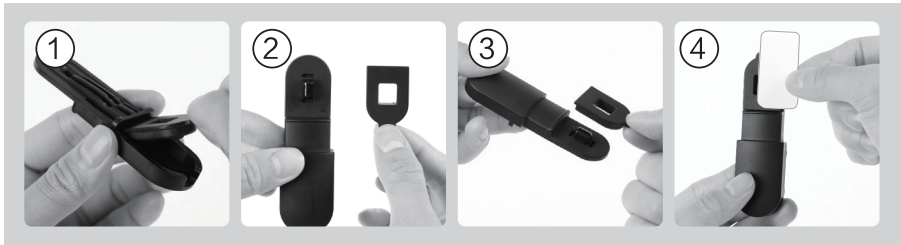
Connect nail printer's WiFi: O2Nails-XXXXX



Password: 8888 8888

# Print a Test Pattern

1. Paste the test paper medially on the nail holder, leaving a distance of 1cm from the handle part.



Press down the finger holder.



Put it horizontally into the finger holder.



Bounce up the finger holder to fix it.

# Print a Test Pattern

## 2. Select Pattern.

1 Enter "Nail Printing"

2 Click "Next"

3 Click "Search"

4 Input 080000

5 Click "standard test pattern"

6 Click OK, start printing, and wait for 25-30 seconds

# Print a Test Pattern

3. Contrast printing pattern effect.



After printing, press down and take it out.



Compare with QC Standard Test Pattern Compared Card.

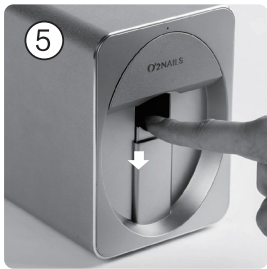
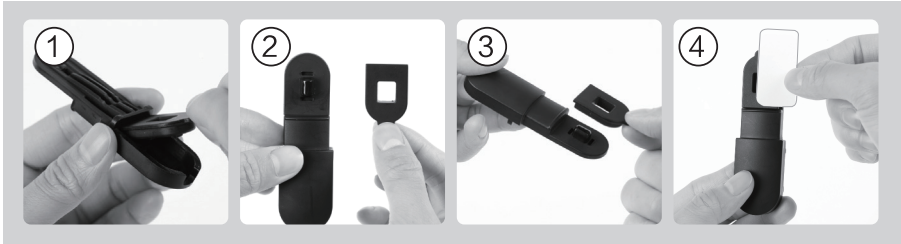
Remark:

- ① As the QC standard test pattern may have slight change in color, if there is no big difference, it is normal.
- ② The above is only used to judge the contrast color and clarity by visual.
- ③ If there is a significant difference in color and clarity, it is necessary to do the cartridge test further and judge the results.

# Ink Cartridge Test

When the printing effect such as color and clarity has obvious deviation, please make the ink cartridge test.

1. Put Test Paper into the Finger Holder.



Press down the finger holder.



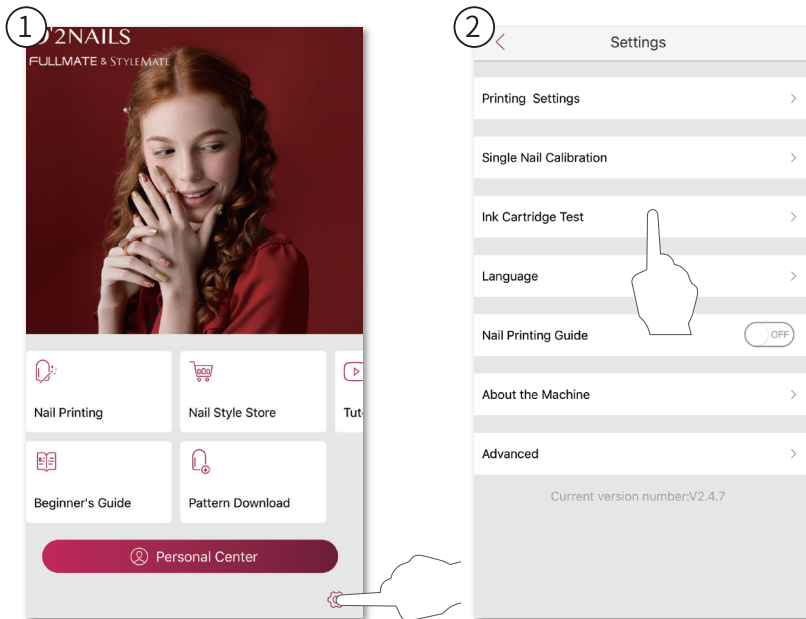
Put it horizontally into the finger holder.



Bounce up the finger holder to fix it.

# Ink Cartridge Test

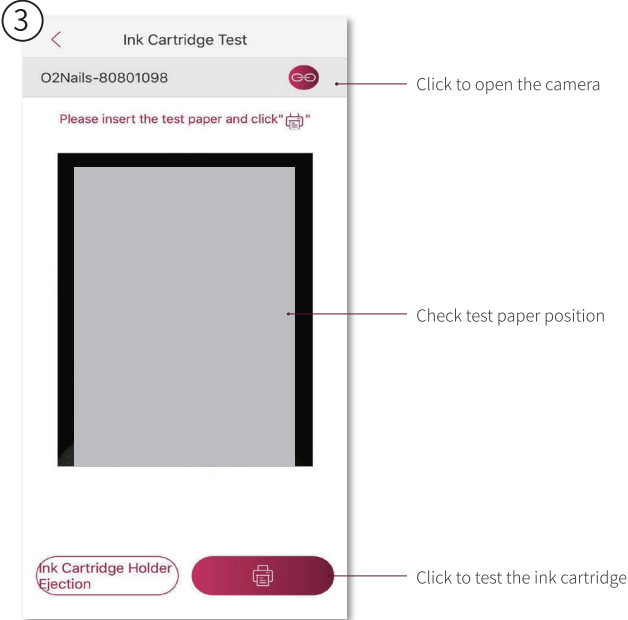
2. Print “Three Color Test Pattern” .



Click Settings “”

Enter Ink Cartridge Test

# Ink Cartridge Test



# Ink Cartridge Test

3. Take Out Test Paper.

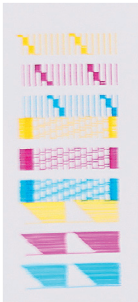


After printing, press down and take it out.

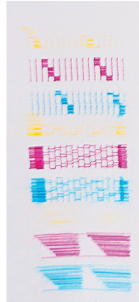


# Ink Cartridge Test

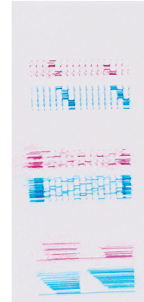
## 4. Analysis of Cartridge Status.



No incomplete line, it means the ink cartridge is normal



Slightly incomplete lines  
① Clean the cartridge nozzles.  
② It's subject to not affect the actual printing result

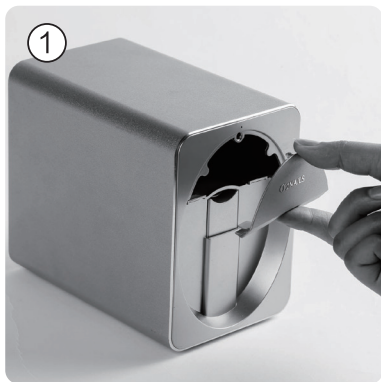


Significantly incomplete lines  
① Clean the cartridge nozzles  
② Test again  
③ Replace a ink cartridge or consult the customer service

Remark: The number of inkjet nozzle is up to 192, less than 10% of nozzle clogged doesn't affect the printing result

• Watch the "Cleaning Ink Cartridge" on the application, it's in the Tutorial's section "Nail Printer Consumables Training Material".

# How to replace the ink cartridge



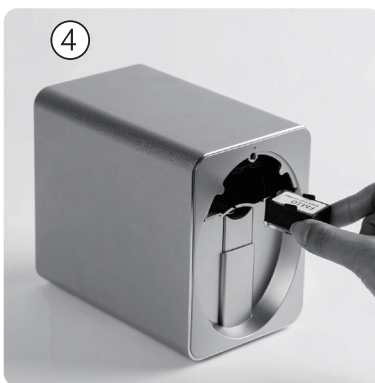
1. Take down the front panel.



2. Press the switch twice in a row to return ink cartridge holder, and then put back the front panel.



3. Hold the front part of the cartridge, press down and take it out.



4. Replace a new cartridge.

# Warranty Policy

Within the warranty period specified in the product warranty card and according to the warranty policy, if the product has any problem under the normal and operating instruction use, the user can apply warranty service from O'2NAILS or its authorized dealer. Please present the warranty card and purchase invoice when you apply this service.

## 1. Warranty period and warranty coverage

- 1) The duration covered by this warranty is one year from the date of purchase.
- 2) If the product has any problem under normal and operating instruction use, according to the warranty policy, the user can apply warranty service from O'2NAILS or its authorized dealer. Please present the warranty card and purchase invoice when you apply this service.
- 3) The product repaired by O'2NAILS or its authorized dealers will continue to enjoy the warranty service during the original warranty period. If it is less than 90 days from the end of the warranty, the replacement parts will enjoy 90 days warranty from the date of its replacement.

## 2. Repair for the following conditions will be charged accordingly

One of the following conditions, even if the product is under warranty, cannot be treated as under warranty product, but can be repaired at a charge:

- 1) One year after the date of purchase.
- 2) Cannot present the valid warranty card or the purchase invoice (except can prove that the product is under warranty).
- 3) Damages caused by failure to use, to repair, or to keep the product in accordance with the instructions (including but not limited to external voltage, current, electromagnetic, abnormal changes in public circuits, etc., those caused by using this product outside the specified environment).
- 4) Damages caused by cleaning, repair, disassembly, mishandling, or other maintenance which is not operated by O'2NAILS or its authorized dealers.
- 5) Damages caused by the use of non-original ink cartridges and non-original spare parts.
- 6) Damages caused by improper movement or improper transportation of the product by the user

- 7) Appearance damages such as abrasion or stains caused during use.
- 8) Damages caused by external causes such as irresistible natural disasters or abnormal voltages.
- 9) The purchase date, product model, buyer name, and dealer name are not recorded or altered on the warranty card.
- 10) The product model listed on the warranty card does not match the actual product.

### 3. Accessories' quality assurance policy

For O'2NAILS original accessories, if there is any quality problem of them and the problem is confirmed by designated professional technician within seven days after receipt, O'2NAILS provides replacement service.

The following conditions are not included:

- 1) Quality problems caused by transportation or improper use by users.
- 2) After the ink cartridge is unsealed, the ink cartridge is color mixed by returning the seal to the nozzle.
- 3) The ink cartridge is clogged due to improper operation, which affects the print quality.

Notice: As not to miss the seven-day replacement period, please check the quality of the starter kit as soon as possible after receiving the O'2NAILS nail printer.

4. The spare parts replaced in the warranty are owned by O'2NAILS.

### 5. How to get the warranty service?

- 1) If you need to use the warranty service, please inform O'2NAILS or its authorized dealer about the damages situation, and present the warranty card and purchase invoice.
- 2) The professional technician designated by O'2NAILS will identify whether the product is a malfunction or damages caused by non-human factors. If it is caused by non-human factors, O'2NAILS will repair the product properly and bear the cost of repair and the cost of its return, but the user should be responsible for the cost of shipping the product to O'2NAILS. If the damaged product is not covered by the warranty, but the user requests to use the warranty service, the user should be responsible for the all the shipping costs and repair costs.
- 3) If you need to apply the warranty service, please contact O'2NAILS authorized dealers that you purchased from, or contact O'2NAILS.

O'2NAILS service contacts:

Tel: +86-02038732006    Email: [service@cybermail.com](mailto:service@cybermail.com)

# FCC

Caution: The user is cautioned that changes or modifications not expressly approved by the party responsible for compliance could void the user's authority to operate the equipment.

This device complies with Part 15 of the FCC Rules. Operation is subject to the following two conditions: (1) this device may not cause harmful interference, and (2) this device must accept any interference received, including interference that may cause undesired operation.

NOTE: This equipment has been tested and found to comply with the limits for a Class B digital device, pursuant to Part 15 of the FCC Rules. These limits are designed to provide reasonable protection against harmful interference in a residential installation. This equipment generates, uses and can radiate radio frequency energy and, if not installed and used in accordance with the instructions, may cause harmful interference to radio communications. However, there is no guarantee that interference will not occur in a particular installation.

If this equipment does cause harmful interference to radio or television reception, which can be determined by turning the equipment off and on, the user is encouraged to try to correct the interference by one or more of the following measures:

- Reorient or relocate the receiving antenna.
- Increase the separation between the equipment and receiver.
- Connect the equipment into an outlet on a circuit different from that to which the receiver is connected.
- Consult the dealer or an experienced radio/TV technician for help.

## FCC Radiation Exposure Statement:

This equipment complies with FCC radiation exposure limits set forth for an uncontrolled environment. This transmitter must not be co-located or operating in conjunction with any other antenna or transmitter.



# Warranty Card



Dear Customer,

Thanks for your focus and support of our products as well as your selection and purchase of our products. In case of any problem during the use of our products, please contact our distributor or manufacturer for help.

## Product information

Product model \_\_\_\_\_

Serial number \_\_\_\_\_

Purchase date \_\_\_\_\_

Purchase region \_\_\_\_\_

Dealer \_\_\_\_\_

Remark

## Buyer information

Name \_\_\_\_\_

Tel \_\_\_\_\_

Email \_\_\_\_\_

Address \_\_\_\_\_

# O'2NAILS

GUANGZHOU TAIJI ELECTRONIC CO., LTD.(Manufacturer)  
Room 416, Building 1, No. 110 Dongguan Zhuang Road, Tianhe District, Guangzhou, China  
Hotline:+0086(20)38732006(Call Center) E-mail: sales@cybermail.com  
WWW.O2NAILS.COM

All information and data listed on this manual are for reference only, the final explanation right belongs to this company.

2024-10